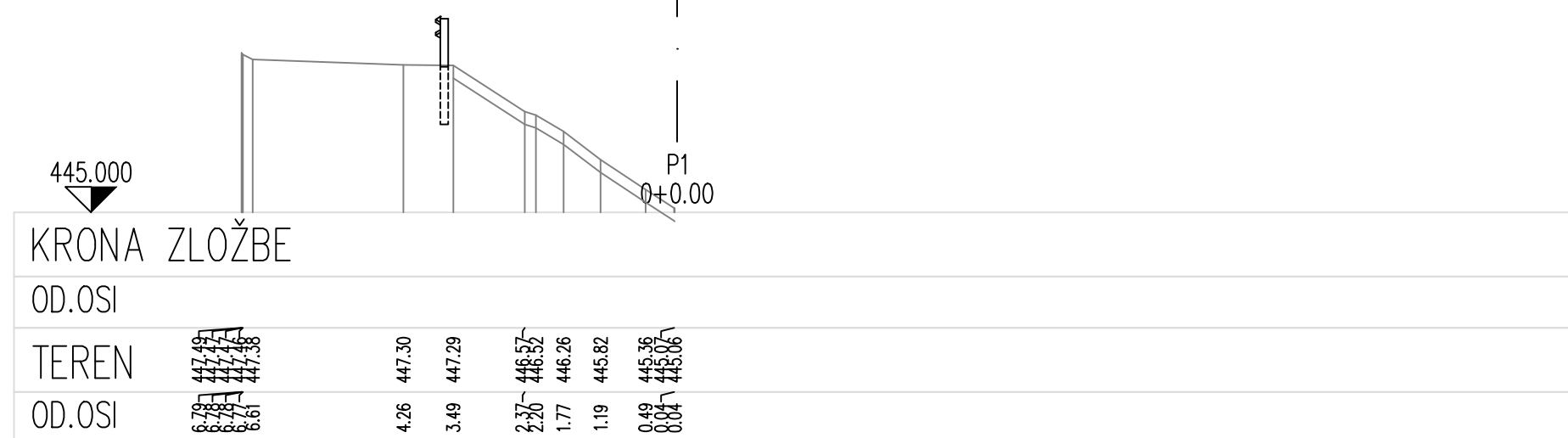
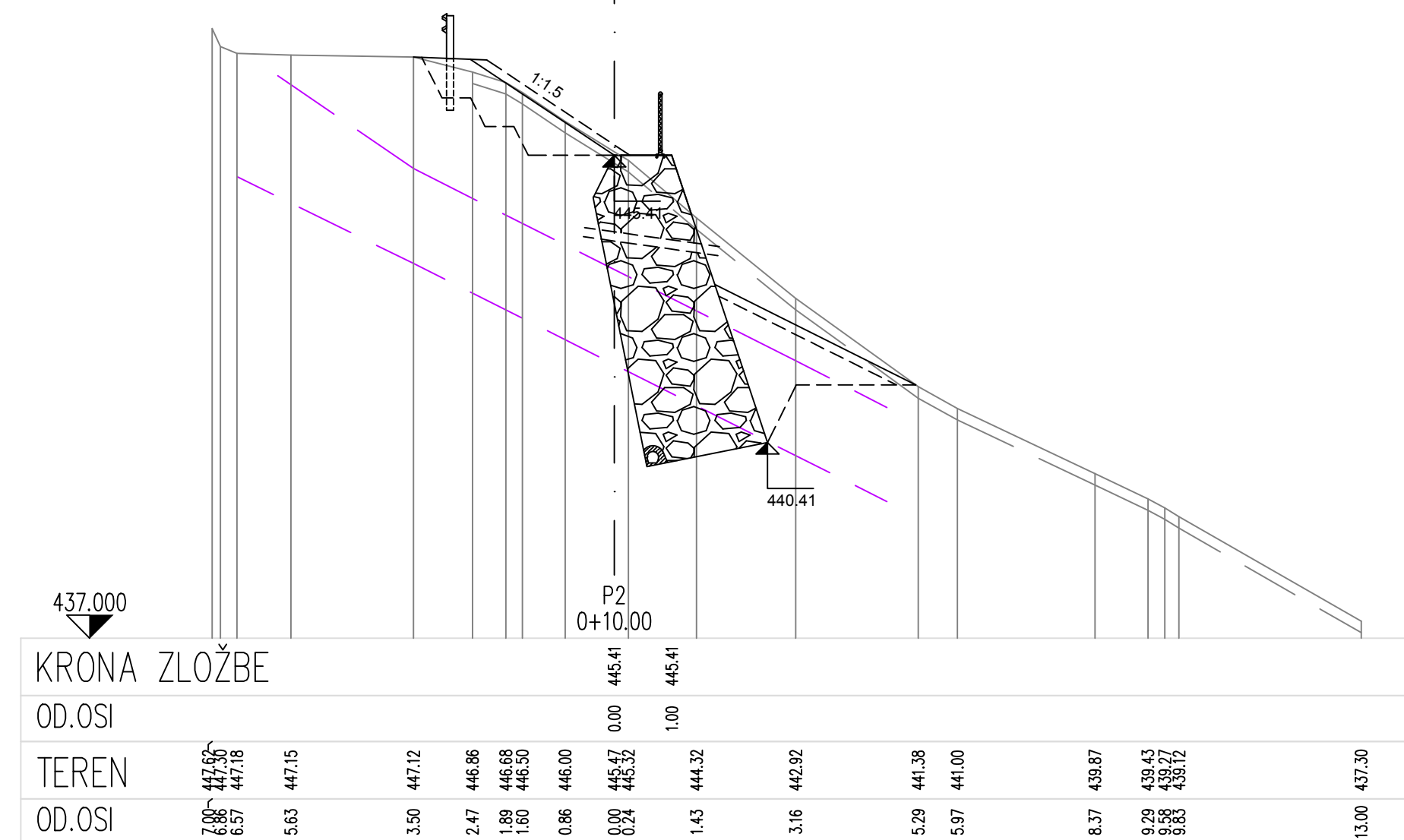


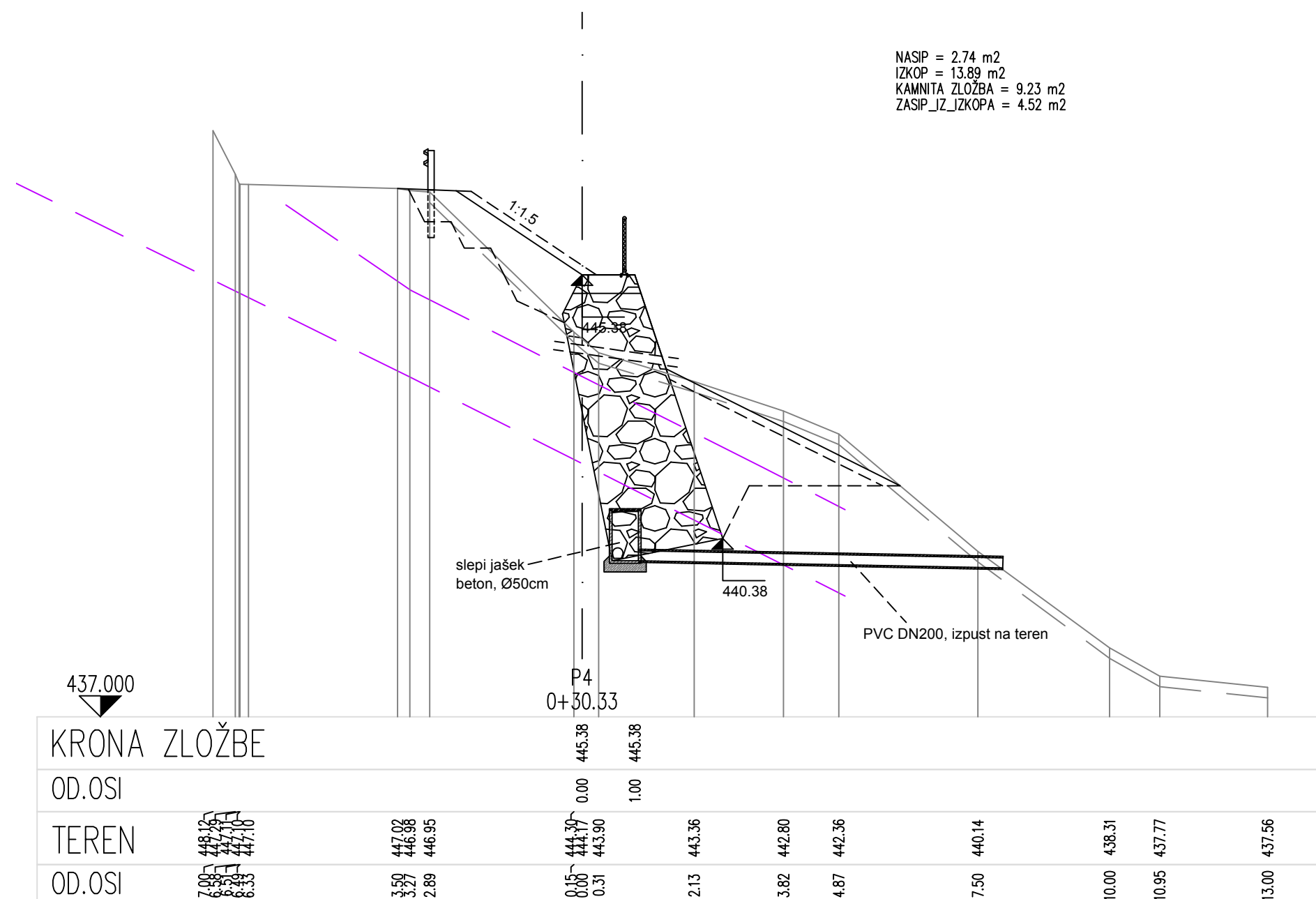
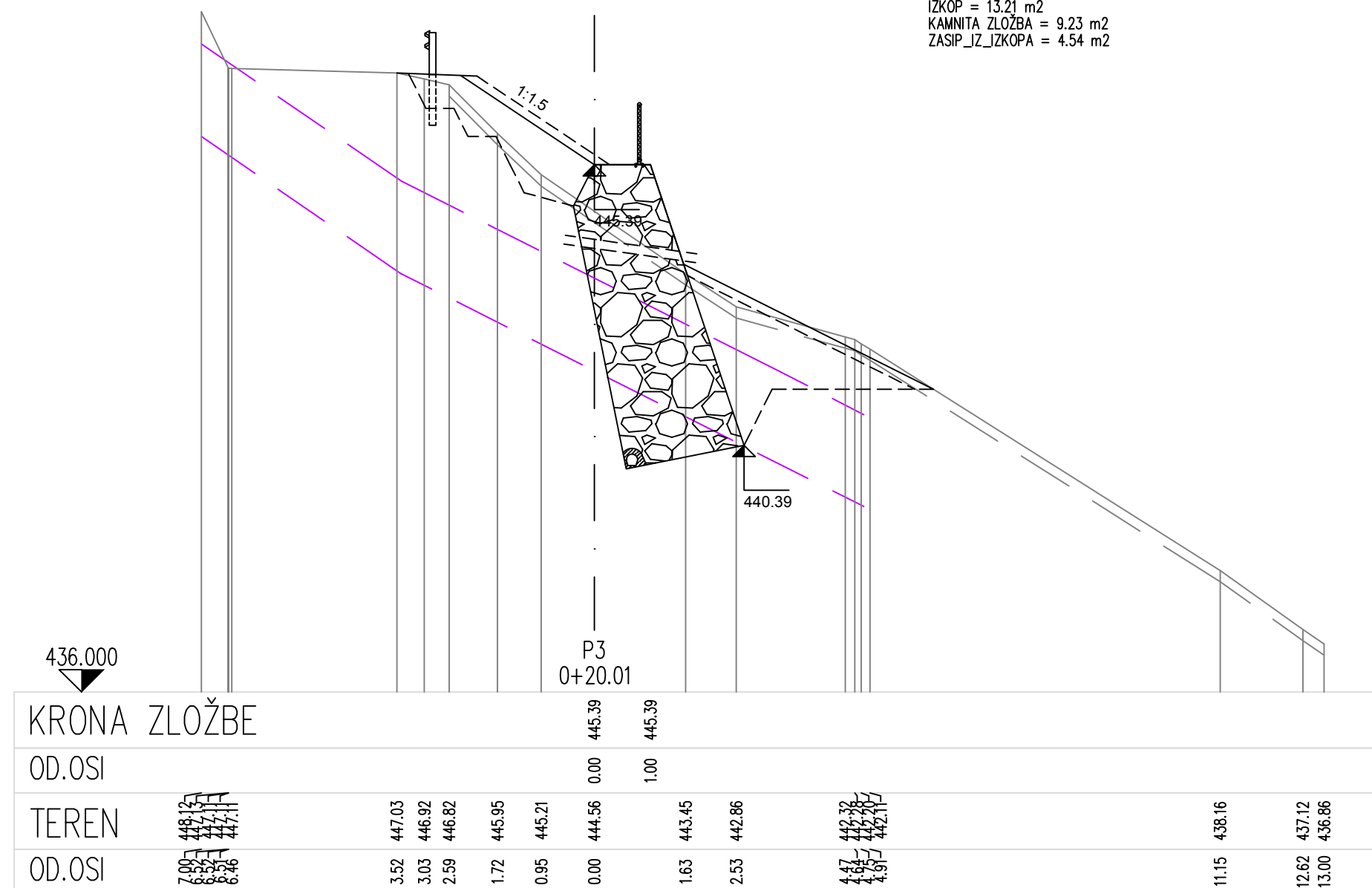
# ORDENI



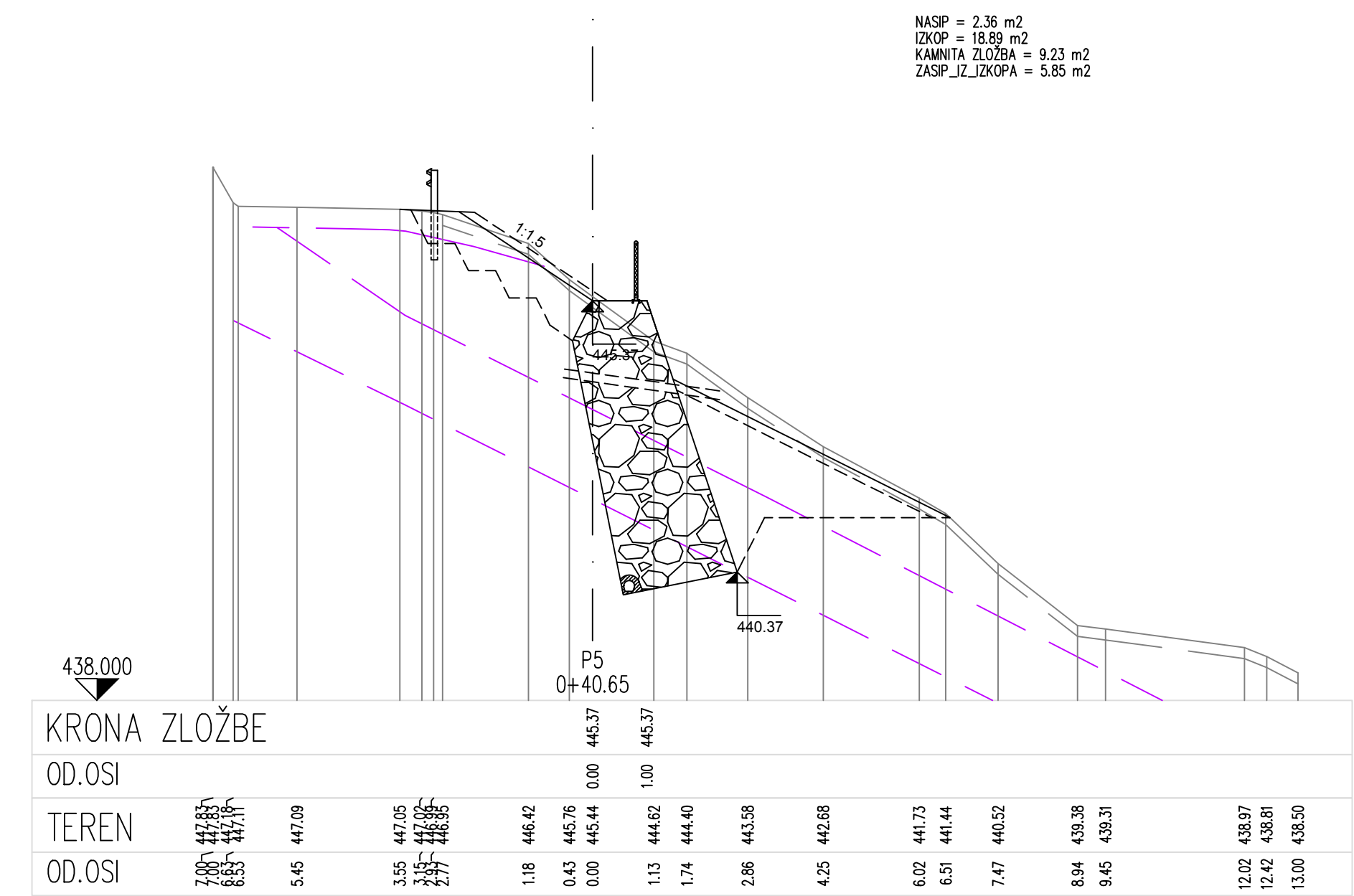
NASIP = 2.60 m<sup>2</sup>  
IZKOP = 16.18 m<sup>2</sup>  
KAMNITA ZLOŽBA = 9.23 m<sup>2</sup>  
ZASIP IZ IZKOPA = 2.97 m<sup>2</sup>



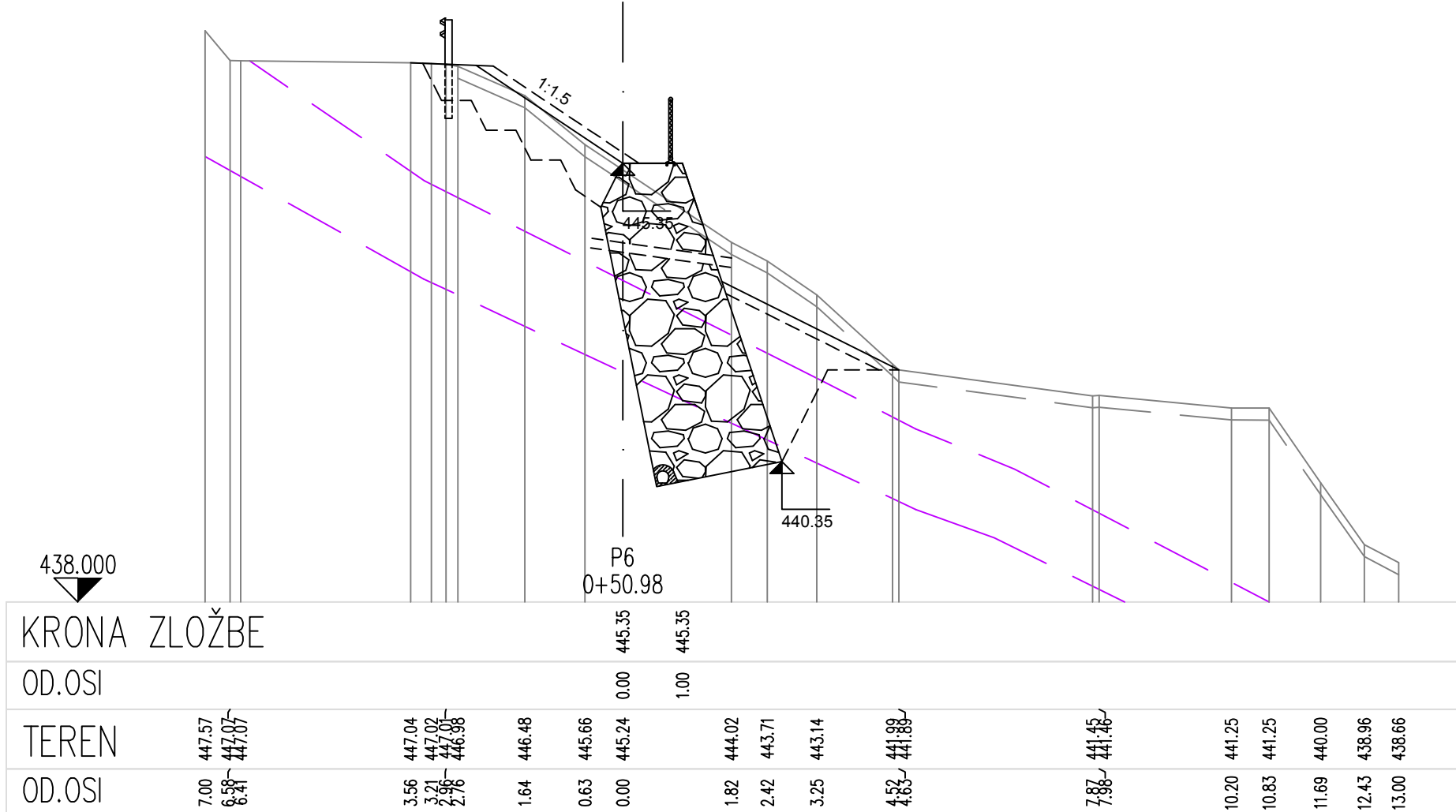
NASIP = 2.72 m<sup>2</sup>  
IZKOP = 13.21 m<sup>2</sup>  
KAMNITA ZLOŽBA = 9.23 m<sup>2</sup>  
ZASIP\_IJ\_ZJKOPA = 4.54 m<sup>2</sup>



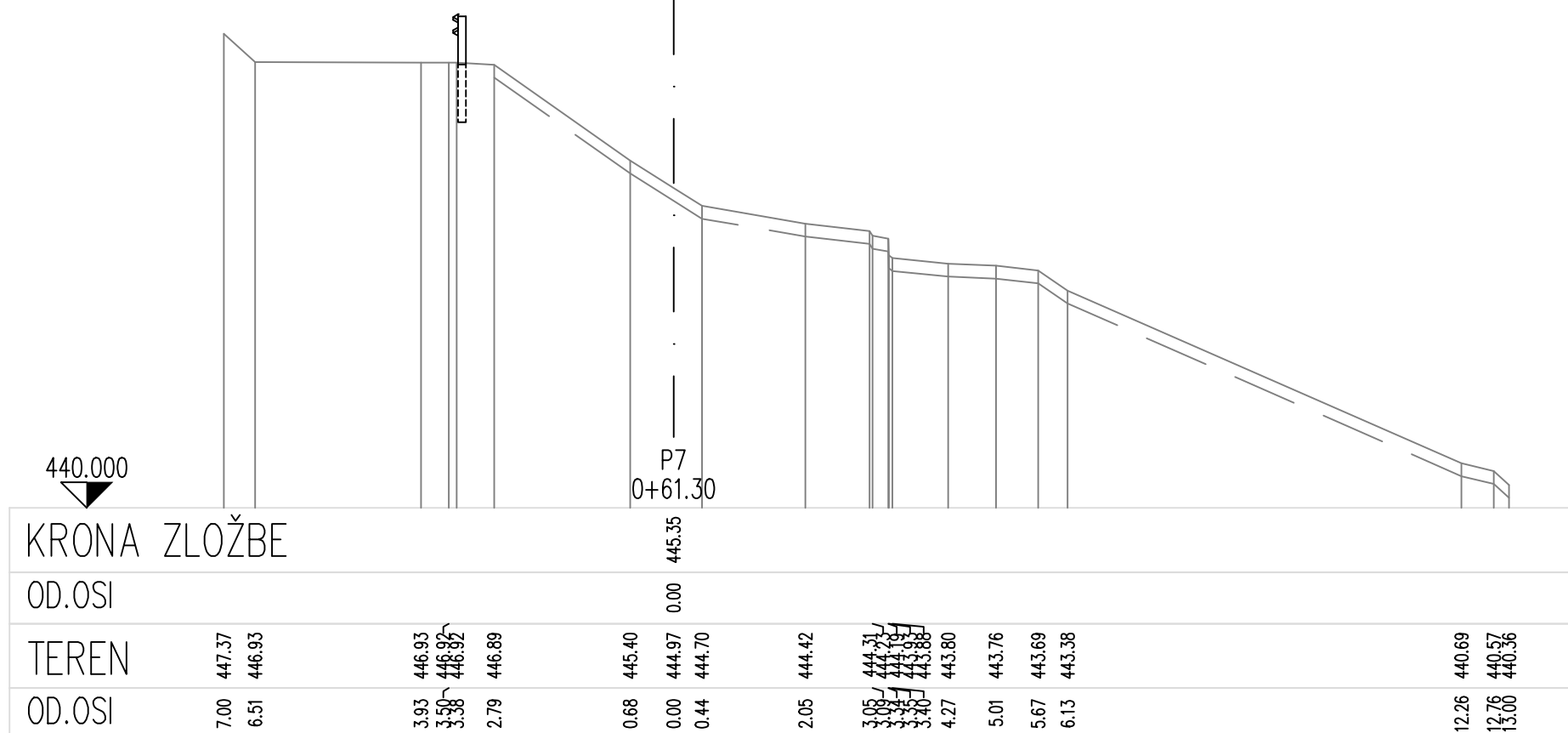
NASIP = 2.74 m<sup>2</sup>  
IZKOP = 13.89 m<sup>2</sup>  
KAMNITA ZLOŽBA = 9.23 m<sup>2</sup>  
7ASIP IZ IZKOPA = 4.52 m<sup>2</sup>



NASIP = 2.36 m2  
IZKOP = 18.89 m2  
KAMNITA ZLOŽBA = 9.23 m2  
ZASIP IZ IZKOPA = 5.85 m2



NASIP = 2.40 m<sup>2</sup>  
IZKOP = 15.58 m<sup>2</sup>  
KAMNITA ZLOŽBA = 9.23 m<sup>2</sup>  
ZASIP\_IZ\_IZKOPA = 2.81 m<sup>2</sup>



Izračun količin								
Prof.	Slac Razd.	NASIP [m <sup>2</sup> /m]	Razd.	IZKOP [m <sup>2</sup> /m]	Razd.	KAMINITA ZLOŽABA [m <sup>2</sup> /m]	Razd.	ZASIP IZ_IKOPKA [m <sup>2</sup> /m]
P2	0+10.00	2.602		16,180		9.232		2.968
	10.010	26.630	10.010	147.075	10.010	92.417	10.010	37.571
P3	0+20.01	2.719		13.206		9.232		4.539
	10.320	28.181	10.320	139.807	10.320	95.279	10.320	46.746
P4	0+30.33	2.743		13.889		9.232		4.521
	10.320	26.316	10.320	169.140	10.320	95.279	10.320	53.514
P5	0+40.65	2.357		18.891		9.232		5.850
	10.330	24.579	10.330	178.057	10.330	95.371	10.330	44.746
P6	0+50.98	2.401		15.583		9.232		2.813
		105.707		634.079		378.347		182.577
Ukupno:								
		NASIP [m <sup>2</sup> ]		IZKOP [m <sup>2</sup> ]		KAMINITA ZLOŽABA [m <sup>2</sup> ]		ZASIP IZ_IKOPKA [m <sup>2</sup> ]
Metoda izračuna: Standard								

[illegible]